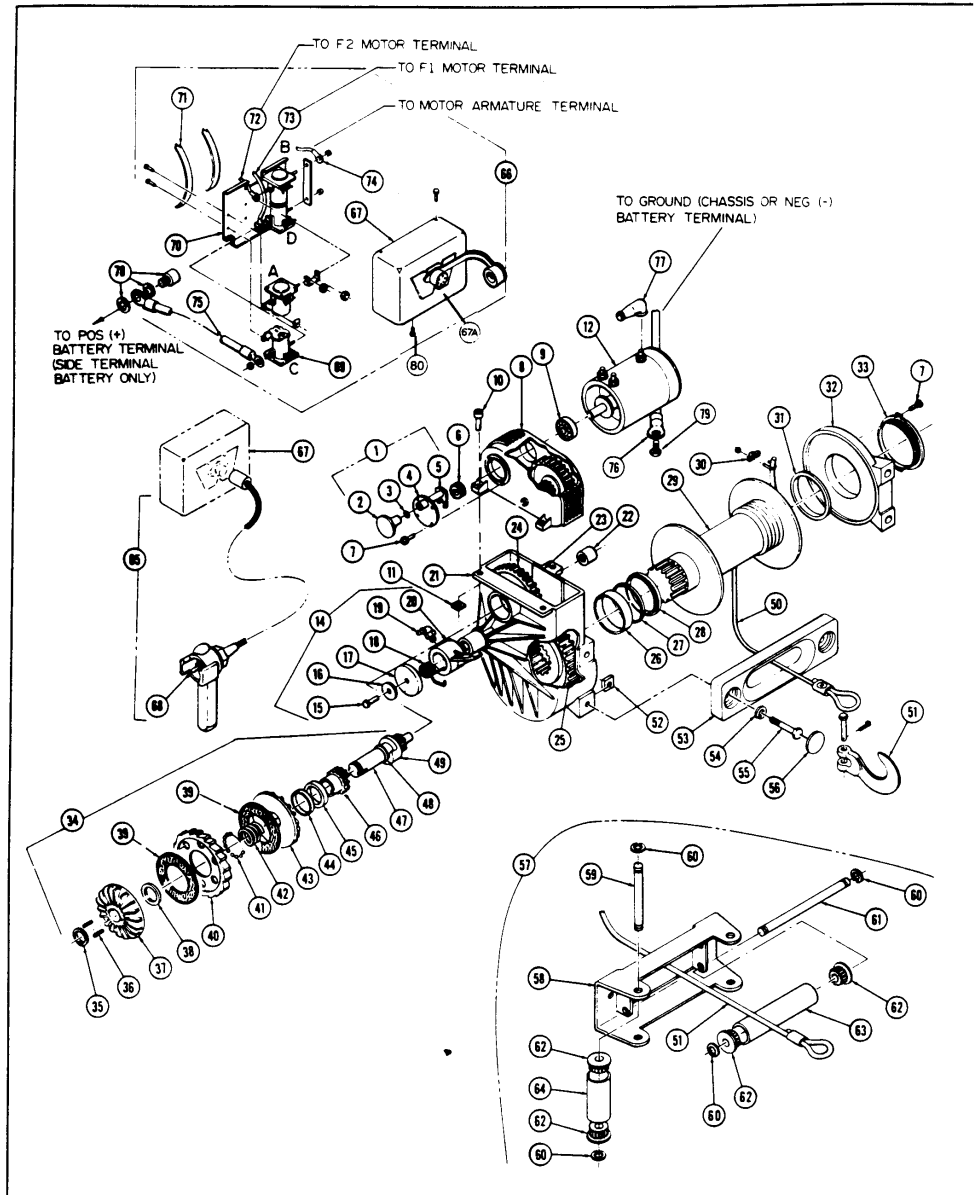


# M8274

SERIAL NO. UP TO 337844



# M8274

## SERIAL NO. UP TO 337844

ITEM	QTY.	PNL	DESCRIPTION
1	1	8326	CLUTCH ASSEMBLY (Includes Items 2 thru 5)
2	1	8328	SHIFT KNOB
3	1	7596	SEAL
4	1	8325	CLUTCH HOUSING
5	1	8322	SHIFTER ASSEMBLY
6	1	9054	MOTOR PINION GEAR (Keyed)
6	1	15879	MOTOR PINION (Splined)
7	4	8548	SCREWS, 10-24 x 3/8"
8	1	9285	UPPER HOUSING ASSEMBLY (Includes Item 9 and Cluster Gears. Due to technical assembly requirements, the Upper Housing and Cluster Gear are not available separately)
9	1	8316	ARMATURE BEARING
10	3	3962	CAPSCREW, 5/16-18 x 3/4"
11	3	7953	SQUARENUT, 5/16-18
12	1	7536	MOTOR, 12V DC MRV-84
13	1	8803	MOTOR, 24V DC
14	1	7605	PAWL ASSEMBLY (Includes Items 15 thru 20)
15	1	8867	CAPSCREW, 1/4-20 x 1/2"
16	1	9256	WASHER
17	1	9220	PROTECTIVE CAP
18	1	9257	PAWL SPRING
19	1	9245	GREASE FITTING
20	1	+	PAWL
21	1	7594	LOWER HOUSING ASSEMBLY (Includes Items 22, 26 and 27)
22	1	8356	BEARING
23	1	7552	RETAINING PLATE
24	1	7548	INTERMEDIATE GEAR
25	1	7550	MAIN GEAR
26	1	#	BUSHING
27	1	#	SEAL
28	1	#	THRUST WASHER
29	1	7708	DRUM
30	1	2048	CLAMP, WIRE ROPE
31	1	#	BUSHING
32	1	7532	END SUPPORT ASSEMBLY (Includes Items 31, 33 and 7)
33	1	7582	END CAP
NS	1	8680	SERVICE KIT, LOWER HOUSING (Includes Items 26, 27, 28 and 31)
34	1	7634	BRAKE ASSEMBLY (Includes Items 35 thru 39)
35	1	7614	RETAINING RING
36	2	7668	KEY
37	1	8703	OUTER BRAKE DISC
38	1	^	HUB
39	2	9734	FRICTION MATERIAL
40	1	7601	RATCHET
41	21	^	STEEL BALL
42	1	^	SPRING
43	1	7600	INNER BRAKE DISC
44	1	7612	LIP SEAL
45	1	7611	BUSHING
46	1	7562	SPLINED CAM
47	1	7732	PINION AND CAM (Includes Item 49)
48	1	7613	O-RING SEAL
49	1	-	CAM PART OF 7732
NS	1	8409	BRAKE SERVICE KIT (Includes Items 35, 36, 38, 39, 41 and 42. NOTE: Winches serial numbered 46945 and lower must replace the PN 7601 Ratchet when using the kit)
50	1	2601	WIRE ROPE ASSEMBLY (Includes Item 51)
51	1	5320	HOOK, 3/8"
52	4	7616	SQUARE NUT

ITEM	QTY.	PNL	DESCRIPTION
53	1	7608	FAIRLEAD
54	2	2146	LOCKWASHER
55	4	7165	CAPSCREW
56	2	2107	SOFT PLUG
57	1	5742	ROLLER FAIRLEAD (Includes Items 58 thru 64)
58	1	5741	BRACKET
59	2	5744	VERTICAL SHAFT
60	8	6126	RETAINING RING
61	2	5745	HORIZONTAL SHAFT
62	8	2050	BUSHING
63	2	2049	HORIZONTAL ROLLER
64	2	2051	VERTICAL ROLLER

The following parts apply to winches with serial numbers 196115 and higher.  
Visual identity: Plastic protective cap on the Solenoid Housing.

65	1	21710	REMOTE CONTROL LEAD (Includes Item 68 and cord with plastic end)
66	1	13334	SOLENOID PACK, 12V DC (Includes Items 67, 69 and 71-75)
66	1	13343	SOLENOID PACK, 24V DC (Includes Items 67, 69 and 72-75)
67	1	13329	PLASTIC SOLENOID HOUSING W/SOCKET
67a	1	16296	REMOTE SOCKET FOR HOUSING

The following parts apply to winches with serial numbers 196114 and lower.  
Visual identity: Metal spring cap on the Solenoid Housing.

65	1	21711	REMOTE CONTROL LEAD (Includes Item 68 and cord with metal end)
66	1	6000	SOLENOID PACK, 12V DC (Includes Items 71 thru 74, 77)
66	1	6340	SOLENOID PACK, 24V DC (Includes Items 71 thru 74, 77)
67	1	8744	PLASTIC SOLENOID HOUSING W/O HOLE
67	1	5992	PLASTIC SOLENOID HOUSING WITH HOLE
NS	1	5770	MALE PLUG FOR REMOTE CONTROL, METAL
NS	1	5766	FEMALE SOCKET, METAL, FOR SOLENOID HOUSING

The following parts are common to all serial #'s up to 337844

68	1	8813	REPLACEMENT SWITCH
69	4	2040	SOLENOID 12V DC
69	2	6341	SOLENOID 24V DC, PLUS 2 PN 2040
70	1	24552	SOLENOID MOUNTING PLATE 12V DC
70	1	6347	SOLENOID MOUNTING PLATE 24V DC
71	2	6005	CLAMP
72	1	6009	ELECTRIC CABLE 7-1/2"
73	1	6008	ELECTRIC CABLE 6-1/2"
74	1	6007	ELECTRIC CABLE 5-1/2"
75	1	15900	ELECTRIC CABLE 72" POSITIVE
76	1	15901	GROUND CABLE 72" NEGATIVE
77	3	2090	NIPPLE
78	1	5935	SIDE MOUNT BATTERY TERMINAL ADAPT./ACC.
ST*	-	9167	BUSHING INSTALLATION TOOL (Lower housing)
ST*	-	9194	BRAKE CLAMP ASSEMBLY TOOL
ST*	-	9196	SEAL/BUSHING INSTALLATION TOOL (Brake shaft)
79	1	16127	CAPSCREW, HEX HEAD, 5/16-24 x 1/2"
80	3	8763	SOLENOID COVER SCREWS
NS	1	16122	ARMATURE
NS	1	19485	BRUSH SET

+ As 7605 Assembly  
# In 8680 Kit

^ In 8409 Kit  
\* Special Tool